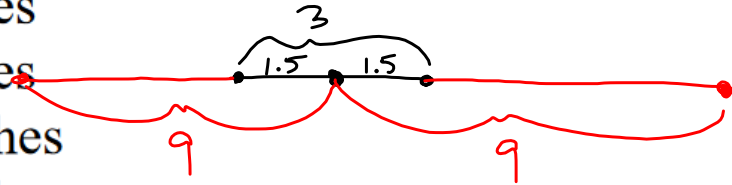


DO NOW

A three-inch line segment is dilated by a scale factor of 6 and centered at its midpoint. What is the length of its image?

- 1) 9 inches
- 2) 2 inches
- 3) 15 inches
- ④ 18 inches



Feb 27-9:42 AM

Dilation with Center NOT at Origin

Plot the dilation of $\triangle ABC$ by a scale factor of 2 with a center of dilation at $(-4, -9)$.

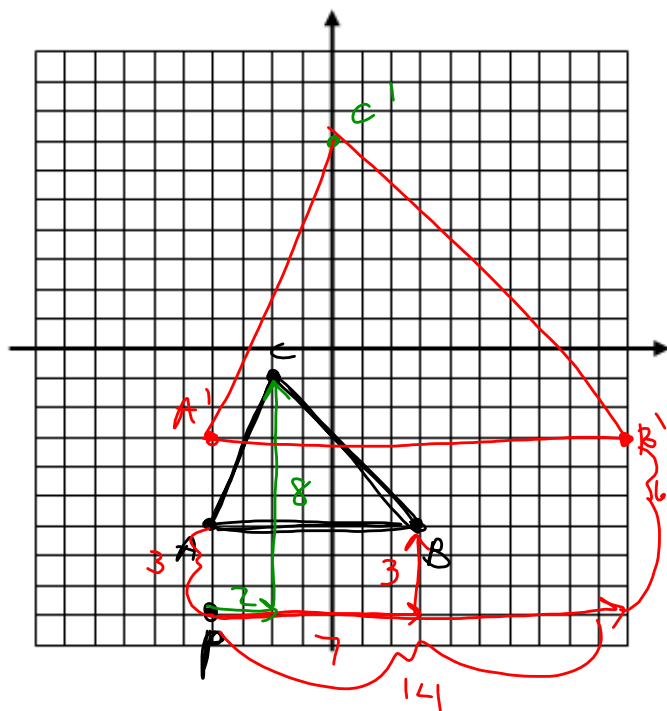
$A(-4, -6)$, $B(3, -6)$, and $C(-2, -1)$

$$PA' = 2 \cdot PA$$

$$A'(-4, -3)$$

$$B'(10, -3)$$

$$C'(0, 7)$$



Dec 12-9:56 AM