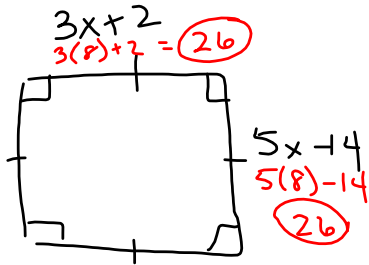


**DO NOW**

In a square, two sides have measures of  $3x + 2$  and  $5x - 14$ . What is the perimeter of the square?



$$3x + 2 = 5x - 14$$

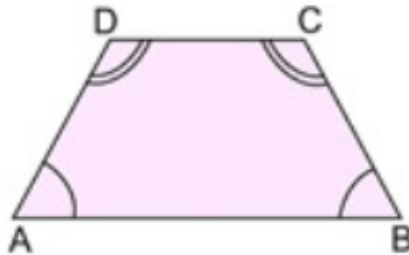
$$16 = 2x$$

$$8 = x$$

$$4(26) = 104$$

Dec 4-12:39 PM

A isosceles trapezoid is a trapezoid with congruent base angles.



If a quadrilateral is an isosceles trapezoid,

- the diagonals are congruent
- the opposite angles are supplementary

$$\angle D + \angle B = 180$$

$$\angle A + \angle C = 180$$

Dec 4-8:26 AM